

HAND SHOWER BRACKET FOR ASSIST GRABRAILS

CODE: CAC02

FEATURES

- Bracket mounts to a 32mm vertical grabrail
- Reversible for left/right fitting
- Positive location and holding of the hand shower
- Slide/lock adjustability to accommodate different shower heights
- Click/lock settings to change spray shower angle
- Durable chrome finish
- Quick and easy installation



MODEL

Hand shower bracket	Chrome	CAC02
---------------------	--------	-------

WARRANTY

Accessories 10 years product replacement
-refer to T&Cs at www.johnsonsuiss.com.au



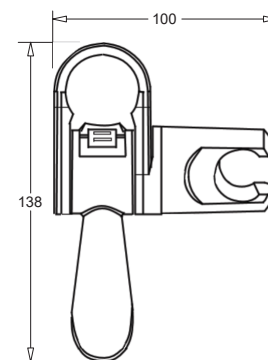
Note:

This bracket is included as a component in a set with shower rails and hand shower*:

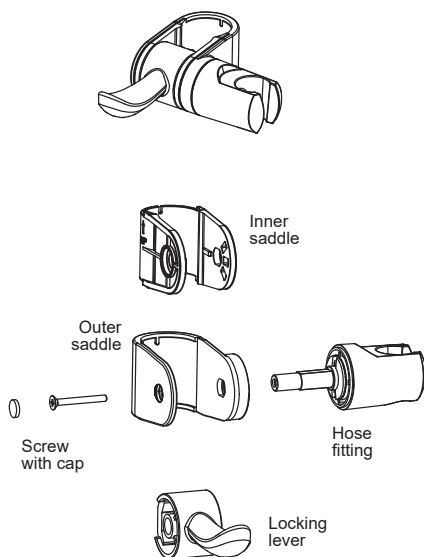
- BR7011L.JTFN - LH shower rail + JTFN18 hand shower and hose
- BR7011R.JTFN- RH shower rail + JTFN18 hand shower and hose
- BR1090.JTFN- Vertical Shower rail + JTFN18 hand shower and hose

* Wall elbow hose connection with check valve is also included

DIMENSIONS

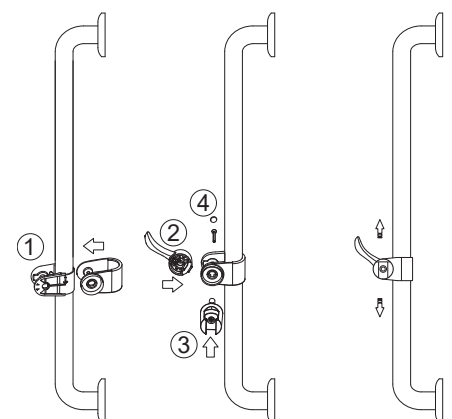


COMPONENTS



ASSEMBLY

1. Disassemble the bracket to enable it to be placed over the grabrail.
2. Reassemble the shower bracket over the grabrail following the sequence 1,2,3,4.
3. When unlocked the shower bracket assembly can slide up or down the grabrail.
4. The locking lever should be in the 'middle' position for assembly



TECHNICAL DATA SHEET

SUPERSEDES ALL PREVIOUS ISSUES

All dimensions are in millimetres and are subject to normal manufacturing variation.
As product development is ongoing BPA reserves the right to vary specifications without notice.
Bathroom Products Australia Pty Ltd ABN 87 079 297 617