


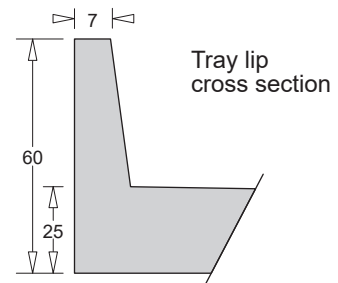
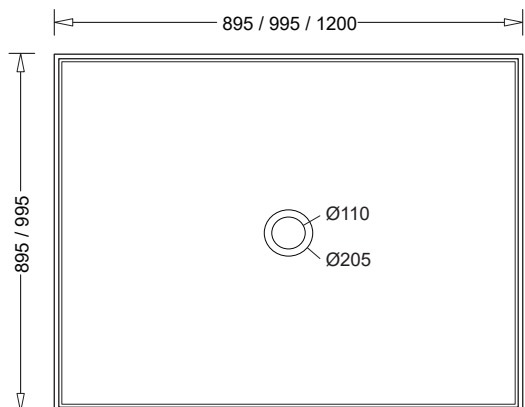
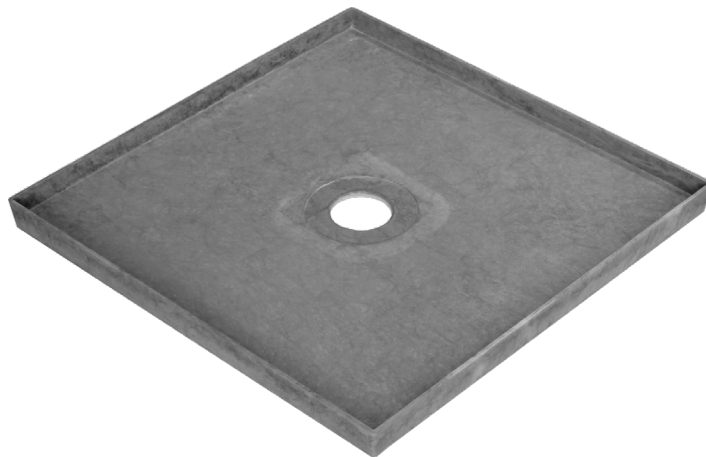


# Tile Tray

## INSTALLATION GUIDE

These instructions are for the following Tile Tray products:

SQUARE TILE TRAY	W	D	H	PUDDLE FLANGE TYPE	WASTE FORMAT
MSB728PF. OUTTCHS	895	895	60	A	
MSB748PF. OUTTCHS	995	995	60	B	
RECTANGULAR TILE TRAY					
MSB741PF.OUTTCHS	1200	895	60	A	



PLEASE READ THESE INSTRUCTIONS CAREFULLY BEFORE INSTALLING.  
FAILURE TO FOLLOW THE INSTRUCTIONS WILL VOID WARRANTY

It is the responsibility of the installer of this Marbletrend tile tray to comply with local building regulations regarding waterproofing and installation.  
It is the responsibility of the installer to ensure a watertight seal between the tile tray, puddle flange and waste outlet.

## INSTALLATION GUIDE

### TIMBER FLOOR INSTALLATION (DIAGRAMS 1 & 2)

Ensure sub-floor is sound and if necessary replace any timber that may be affected by damage or rot.

The installation area must be level - the tile tray has an built-in fall to the waste.

Fix reinforcing noggins at 450mm(max.) centres between joists and use trimmers and floor sheeting to provide extra support.

The framing forming the opening in the waste outlet area should not exceed 200x200mm.

Fix the tile tray to the floor with Sikaflex® 11FC (a water resistant, elastic adhesive/sealant). The sealant should be applied as a continuous bead to the underside of the tray. The sealant must be applied to clean surfaces to ensure good adhesion.

DIAGRAM 2

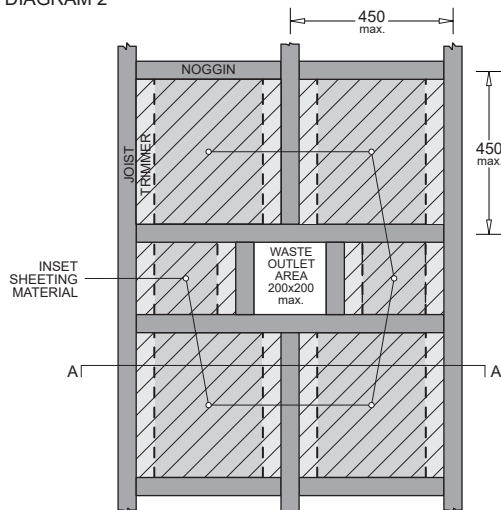
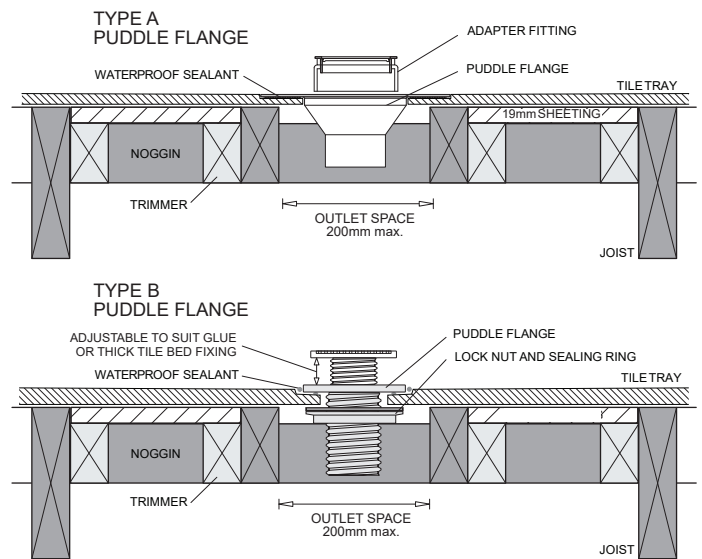
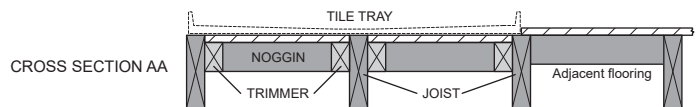


DIAGRAM 1



- Joists and noggins
- Trimmers
- Floor sheeting (19mm)



### CONCRETE FLOOR INSTALLATION (DIAGRAM 3)

The installation area must be level - the tray has an in-built fall to the waste.

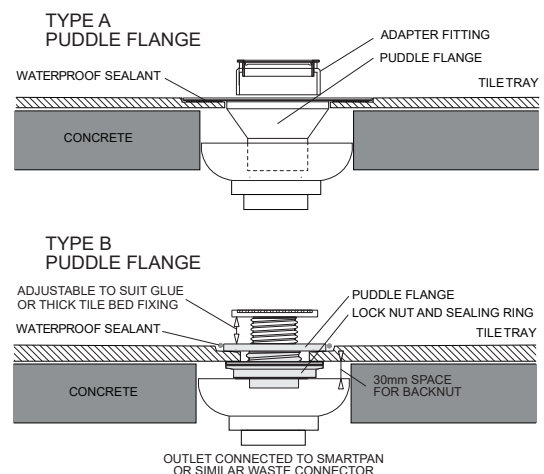
Fix the tile tray to the floor with Sikaflex® 11FC (a water resistant, elastic adhesive/sealant). The sealant should be applied as a continuous bead to the underside of the tray.

To ensure correct adhesion the sealant must be applied to clean surfaces

### OUTLET INSTALLATION

Apply silicone sealant to the underside of a puddle flange rim and fit to the tray outlet to ensure a waterproof seal. Then fit to the waste outlet

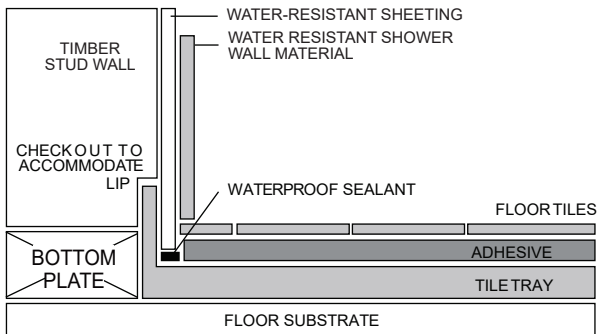
DIAGRAM 3



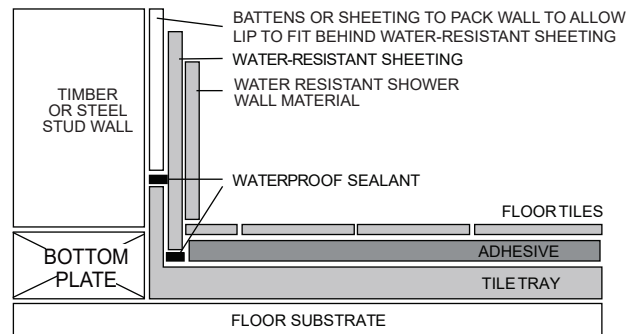
## INSTALLATION GUIDE

### TILING SOLUTIONS

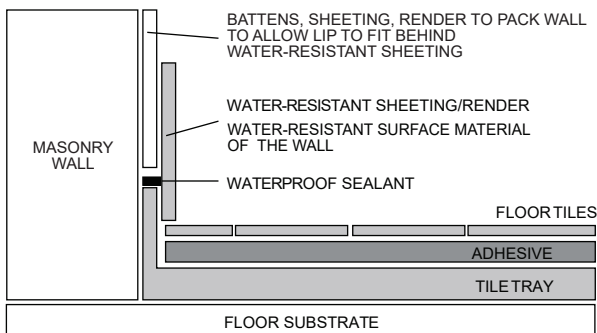
#### STUD FRAME - CHECKED-IN-WALL JUNCTION



#### STUD FRAME - BUTT JUNCTION



#### DOUBLE/SOLID BRICK - BUTT JUNCTION



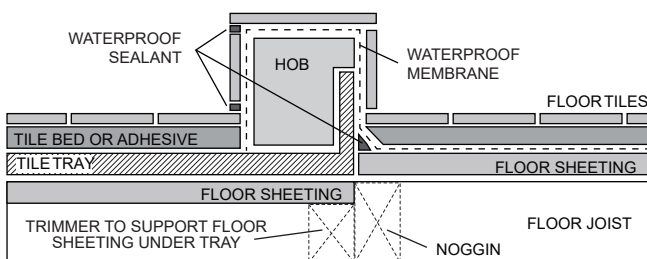
### INSTALLATION OF TILES

To ensure correct tile adhesion pre-clean dirt and dust from the tray (methylated spirits is recommended for cleaning).

Epoxy based adhesives are recommended for direct fixing of tiles to the tray.

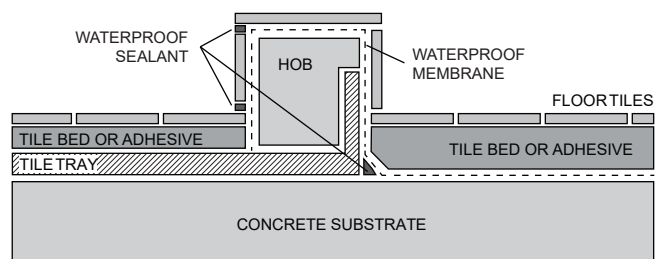
### FLOOR JUNCTIONS

#### HOBBED - SHEETED TIMBER FRAME SUBSTRATE



TIMBER MUST NOT BE USED FOR HOB

#### HOBBED - CONCRETE SUBSTRATE

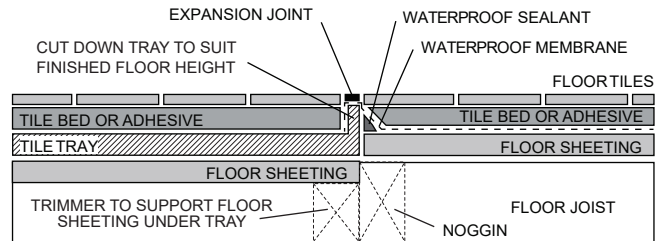
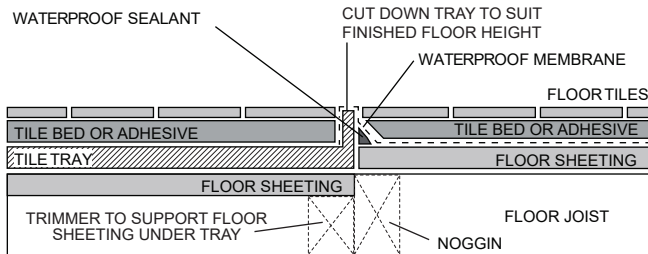


TIMBER MUST NOT BE USED FOR HOB

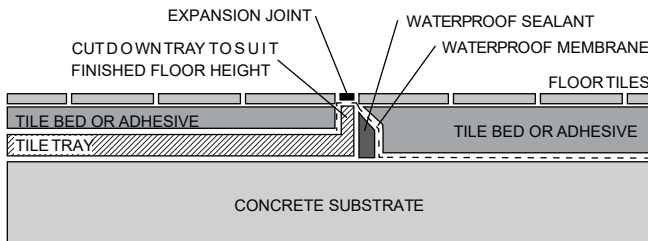
## INSTALLATION GUIDE

### FLOOR JUNCTIONS: cont.

#### HOBLESS - SHEETED TIMBER SUBSTRATE



#### HOBLESS - CONCRETE SUBSTRATE



#### CUTTING INSTRUCTIONS

A diamond blade is recommended if the tray lip needs to be cut down.

All cutting should only be done in a well ventilated area using eye protection and a dust mask.

#### SMARTSEAL/SMARTPAN FITTING

1. Seal waste fitting to tray and tighten.
2. Fit the stainless steel ring to the inside of the rubber Smartseal (about half way down the upstand).
3. Apply a bead of silicone to the inner ledge of the Smartpan.
4. Carefully position the Smartseal in the Smartpan (with the ring facing up) and push down onto the ledge of the Smartpan. The ring should be pushed down firmly into the corner of the Smartpan ledge (use a piece of wood or similar, taking care not to puncture the Smartseal).
5. Locate the position of the waste on the in the Smartseal and cut a hole 10mm smaller than the OD of the waste fitting - note that this must be a minimum of 20mm in from the edge of the Smartpan wall.
6. Cut a hole in the polystyrene disc to accommodate the waste and place it on top of the Smartseal - this prevents the flexible Smartseal from lifting in the unlikely event of back-pressure from the sewer line.
7. Apply silicone sealant to the waste outlet thread and lower the tile tray onto the Smartpan - the threaded waste may need to be cut shorter to permit correct discharge into the Smartpan

