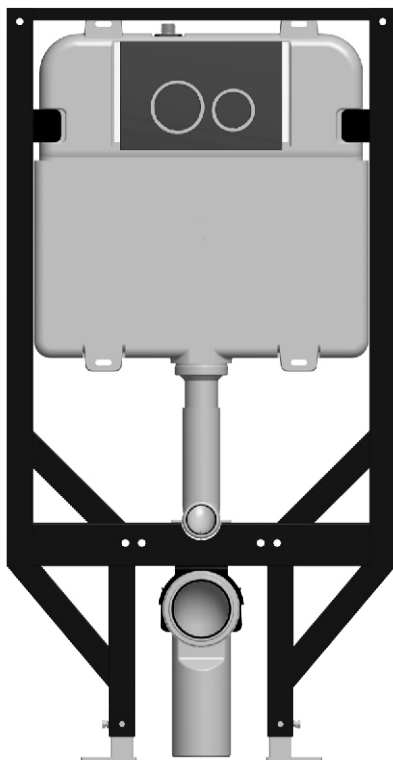


TETRAGON ECONOFLUSH

INWALL CISTERN WITH WALL HUNG PAN

FRONT DUAL FLUSH PUSH BUTTONS

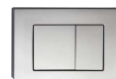
4.5/3LITRE FLUSH



JB40



JB50



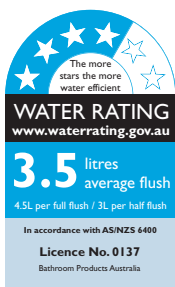
JB60



JB70



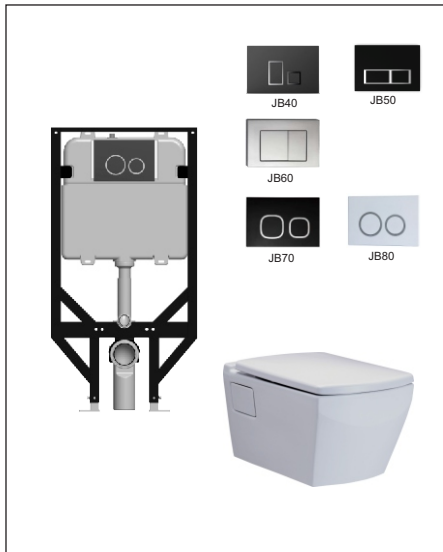
JB80



TETRAGON ECONOFLUSH

Commercial

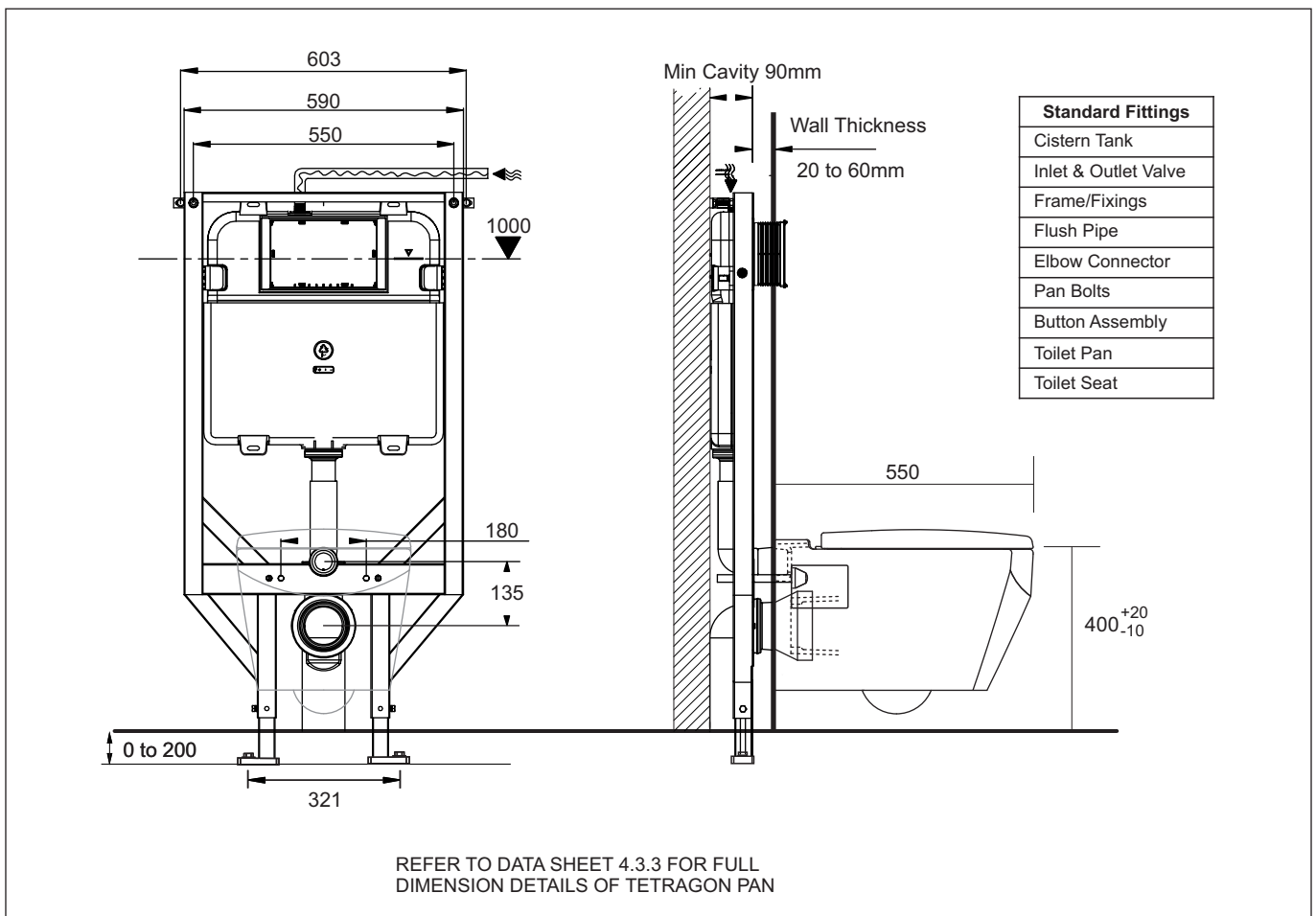
INWALL CISTERN WITH WALL HUNG PAN



- A concealed inwall cistern with integrated mounting frame coupled with a modern compact wall hung pan
- Standard inwall unit that is suitable for commercial or domestic applications
- Adjustable legs to accommodate different pan heights (up to 450mm)
- Top water entry
- Suitable for tiled wall thickness of 20 to 60mm
- Five attractive button actuator styles with different finishes

Provided

Item	Description	Code
Cistern	EconoFlush Framed Inwall Cistern	J2986
Toilet	Tetragon Wall Hung P Pan	C1987
Seat	Tetragon Soft Close Seat	C90841
Button	Dual Flush Button	Available in: Chrome, Matt White, Black
		JB40
		JB50
		JB60
		JB70
	Dimensions: 245 x 165mm	JB80
Installation	Instruction Sheet	✓



All dimensions are in millimetres and are subject to normal manufacturing variation of +/- 3mm on all surfaces. As product development is ongoing BPA reserves the right to vary specifications without notice.

Bathroom Products Australia P/L ABN 87 079 297 617