

QUADO 600

WALL BASIN

Nominal Size 600 x 445mm



1 TAPHOLE



QUADO 600 ASSIST

WALL BASIN



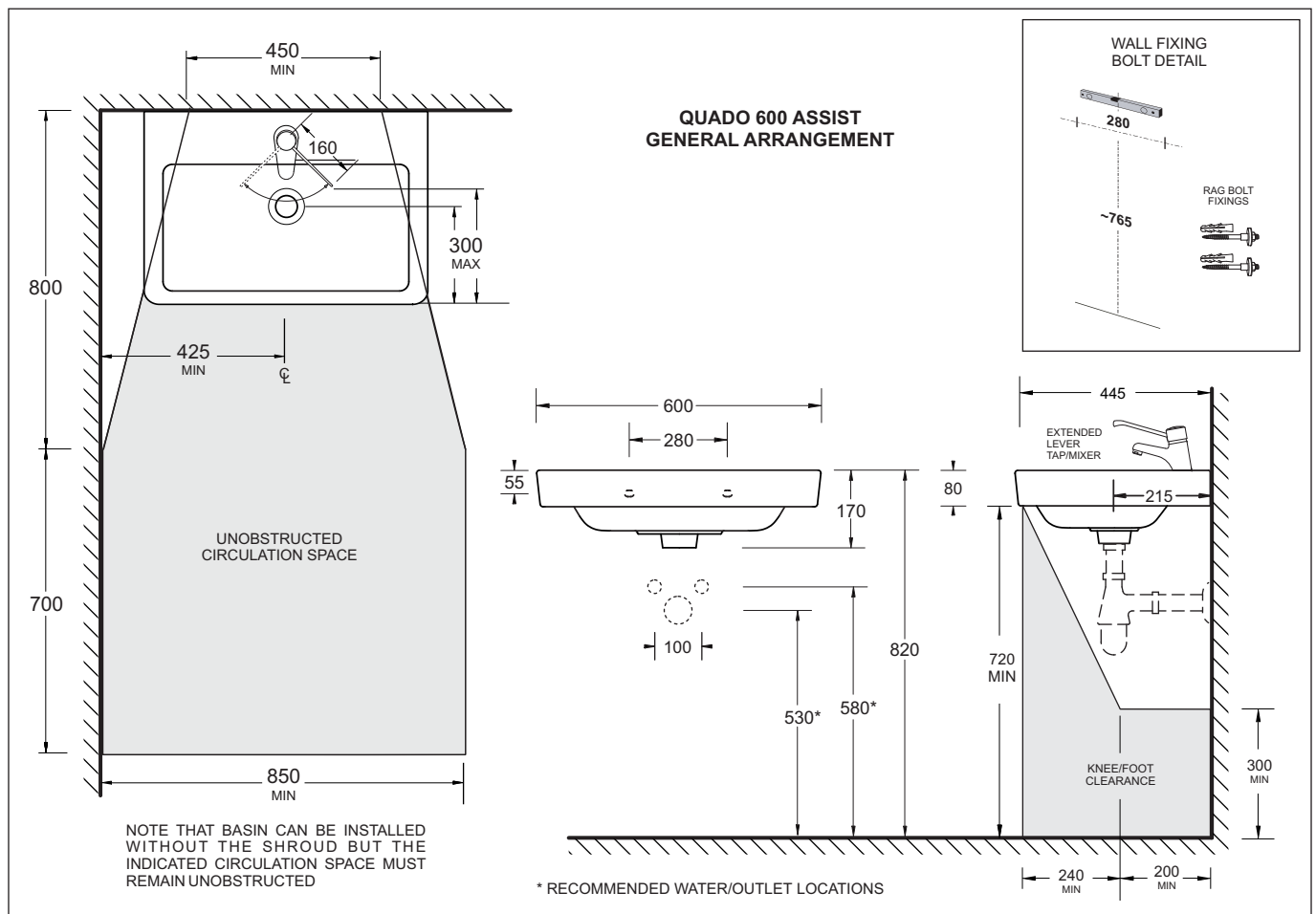
- Contemporary rectangular form ceramic wall basin
- Features a wide soap platform area
- Standard overflow
- Available with 0 or 1 taphole
- 32mm waste outlet (not included)
- Bowl capacity 7.1L
- 600 x 445mm



Provided		
Item	Description	Code
Basin	Quado 600 Wall Basin	J3164
Overflow Trim	CP Cap - JS	X063
Installation	Wall Installation Kit (Rag Bolts)	X022
Plug & Waste	Pop-up Waste 32mm-Chrome	PW5

Optional		
Item	Description	Code
Pedestal	Standard Shroud	J3149
Bottle Trap	Bottle Trap	BT1
Plug & Waste	32/40mm Overflow-Chrome	PW1

THE INSTALLATION OF BASINS MUST COMPLY WITH THE REQUIREMENTS OF AS 1428.1 TO ENSURE THAT THE NECESSARY CIRCULATION ACCESS IS PROVIDED. TAPWARE MUST HAVE EXTENDED LEVERS - THE LEVER TIP MUST BE NOT MORE THAN 300MM FROM THE FRONT EDGE OF THE BASIN THROUGHOUT ITS ARC OF MOVEMENT. ELECTRONICALLY ACTIVATED TAPWARE MAY BE USED.



All dimensions are in millimetres and are subject to normal manufacturing variation of +/- 3mm on all surfaces. As product development is ongoing BPA reserves the right to vary specifications without notice.
Bathroom Products Australia P/L ABN 87 079 297 617