

ECONOFLUSH AIR

INWALL CISTERN

PNEUMATIC DUAL FLUSH PUSH BUTTONS
4.5/3LITRE FLUSH



JB90B



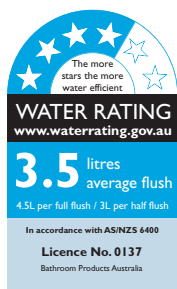
JB90C



JB92W



COMPLIES
WITH AS1428



ECONOFLUSH AIR

UNFRAMED INWALL CISTERN



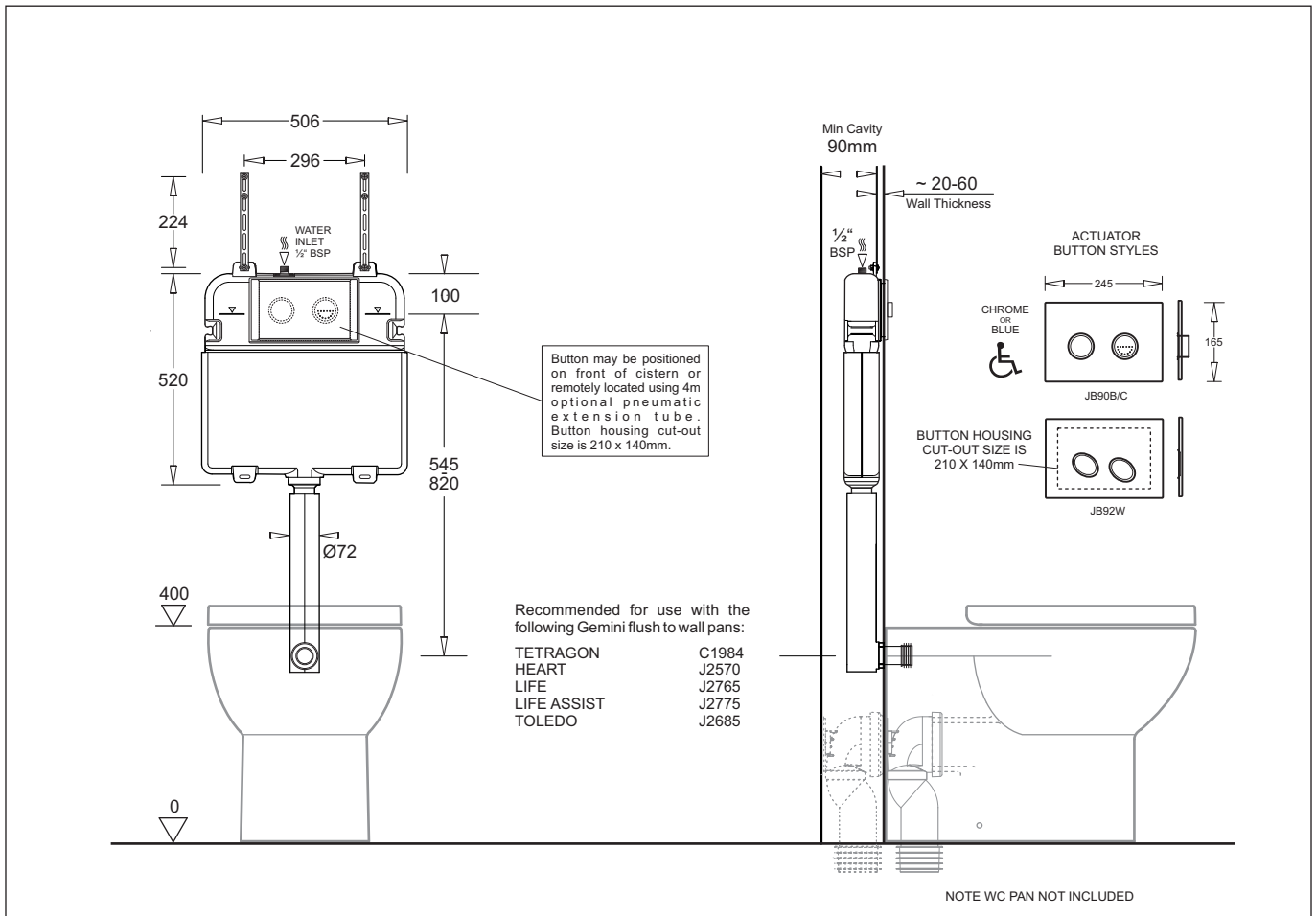
- A compact, concealed inwall cistern
- Suitable for use with floor-mounted pans in commercial or domestic applications
- Top water entry
- 4 Star WELS rated - 4.5/3L dual flush
- Minimum 90mm cavity depth required
- Choice of actuator buttons and styles. Raised buttons available for Special Needs installations (AS1428.1 compliant)
- Optional 4m pneumatic extension tube available for remote placement of actuator buttons

Provided

Item	Description	Code
Cistern	Econoflush In Wall Pneumatic Cistern	J2982
Installation	Instructions	✓

Optional

Button	Dual Flush Button - Raised Blue	OR	JB90B
Button	Dual Flush Button - Raised Chrome		JB90C
Button	Dual Flush Button - White		JB92W
Tube Extension	4m Pneumatic Extension Tube		JBTU



All dimensions are in millimetres and are subject to normal manufacturing variation. As product development is ongoing BPA reserves the right to vary specifications without notice.